



The Yacht Cot System
(Patent Pending)
by ROW SYSTEMS LLC

Product & Installation Guide

1. Yacht Cot System Introduction: Product Overview

At ROW Systems we are inspired by providing accessories for boats that allow you to make the most of your time on the water. One of the coolest things we have enjoyed during the last few summers and our biggest inspiration as a friend group is what we call the “Yacht Cot Arm”. It is a structurally-sound (Connected to the frame of the boat) 304 stainless steel arm that allows you to hang a hammock chair off pontoons. Best positioned over the water! Best used to read a book, bask in the sun, or as a perch spot while relaxing on the lake.

The Yacht Cot System is made of 304 stainless steel to prevent corrosion and can safely hold up to 260 lbs. (**remember to check the weight restrictions of the accessory you attach to the Yacht Cot Accessory Arm**). The mount is meant to be used while the boat is stationary/in calm waters. This is not meant to be used while the boat is in motion (high risk of injury when not used cautiously).

The Yacht Cot Arm is perfect for a hammock chair and is all about setting sail on the sea of relaxation.

- Intended users: Pontoon owners, installers, dealers.
- Product scope: Accessory arm system for hammock chairs and other accessories on pontoon boats.



2. Product Overview

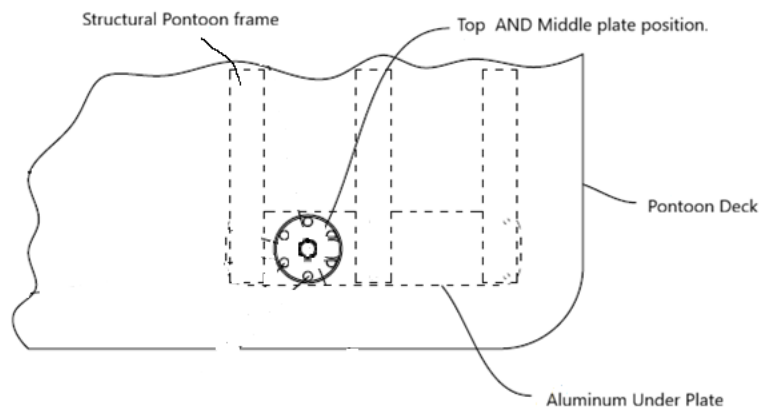
Description: Welded 304 stainless steel accessory arm for hammock chairs that utilizes a 3 plate system to firmly attach the arm to both the deck and frame of your boat.



- **Features:** Stainless construction, aluminum frame plate, through-deck and frame mounting, Minnesota-made, multiple positions (6), and collapsable!

Specs:

- **Material details:** Arm, Bolts, mounting plates (top and middle) are 304 stainless Steel. The bottom plate is 3/8 inch thick aluminum.
- **Compatibility:** Universal design that fits most boats, but position viability will depend on the manufacturer layout. It must have access to at least 2 structural beams and have clearance of 4.5 inches from the center point of installation on top and bottom of the pontoon deck. (Even if there is room, a custom aluminum plate may be needed for some installations, specifically rear boat installs.)



- **Product Weight:** 85Lbs
- **Weight Capacity:** 260 lbs (540 lbs if you have a hammock across two Yacht Cot Arms)

Included components: Arm, Base plates, hardware kit, and a starter hammock (We don't make the hammock, but we like this one.).

3. Pre- Use Safety Information

READ THE LIABILITY WAIVER SENT TO THE PURCHASER

Disclaimer:

Please be advised that the “The Yacht Cot Arm” is designed to hold hammock chairs and their occupants with the utmost care. However, we must remind you of the following:

Aquatic Acrobatics: While the “The Yacht Cot” may inspire circus-like stunts over the water, we recommend keeping your inner acrobat in check to avoid an unplanned splashdown.

Small Fish: While the “The Yacht Cot” inspires the youth in all of us, this chair is extreme in that it can be positioned to hold you over water and is not recommended for children under 13 (or even adults who cannot swim).

Mermaid Transformations: Prolonged use over water does not endow you with the ability to breathe underwater, nor does it guarantee a mermaid or merman transformation. So, if you cannot swim we recommend choosing a different place to relax on your boat.

Seagull Summons: Our product does not come with seagull repellent. Any and all seagull interactions are strictly between you and our feathered friends.

Sunken Treasure: Should you drop any valuables while swinging, we do not provide a team of scuba-diving squirrels for retrieval services.

Weather Warnings: In case of storms, The Yacht Cot is not a lightning rod, but it's still not the best place to be. Please swing responsibly.

Enjoy “The Yacht Cot” with a smile, and remember, Safety First!

Safety Checklist:

Structural & Hardware

- Inspect all welds for cracks, bends, or separation
- Check all bolts, nuts, and fasteners for tightness
- Confirm all mounting brackets are fully seated and not shifting

- Look for any signs of metal fatigue, rust, or corrosion
- Verify the chair frame is not warped or loose

Mounting Point / Anchor

Chair Seat & Components

- Look for tears, loose stitching, or worn fabric
- Confirm seat padding or mesh is intact and not sagging
- Ensure armrests, cup holders, or accessories are secure

Positioning & Environment

- Verify the chair hangs level and does not swing excessively
- Check clearance from the boat, dock, motor, or other obstacles
- Ensure the chair is not positioned over shallow rocks or hazards
- Confirm the water below is deep enough for safe entry if someone falls in
- Make sure weather conditions (wind, waves) won't cause instability

User Safety

- Confirm the user's weight is within the product's rated capacity
- Ensure the user knows how to safely enter and exit the chair
- Remove loose items that could snag on straps or hardware

4. Warranty & Support

Limited Warranty

This product includes a limited warranty covering defects in weld workmanship. The warranty applies only to the original purchaser and covers **weld cracks or structural bends** that occur under **normal, intended use** of the product.

Warranty Coverage

- Covers weld failures caused by **manufacturing defects**, including:
 - Visible cracks in welds

- Structural bends directly resulting from normal use
- Coverage period: **24 months** from the date of purchase

Exclusions

This warranty does **not** cover:

- Damage caused by misuse, overloading, improper installation, or unauthorized modifications
- Normal wear and tears
- Cosmetic imperfections that do not affect structural performance (Note these are handmade and bent, and welded, there will be some imperfections)
- Damage resulting from accidents, impacts, corrosion, or environmental exposure

Owner Responsibilities

- Inspect the product regularly for signs of wear or damage
- Stop using the product immediately if cracks or bends are observed
- Provide proof of purchase when submitting a claim

Remedy

If a weld defect is confirmed, the manufacturer may, at its discretion:

- Repair the product
- Replace the product
- Provide a comparable replacement part

No other warranties, express or implied, are provided. The manufacturer is not liable for incidental or consequential damages arising from the use of this product.

For Warranty work reach out to Sales@theyachtcot.com.

5. Maintenance & Care

Environment	Maintenance Frequency	Notes
Saltwater	Rinse after every use; deep clean monthly; protect every 1–3 months	304 will tea-stain quickly; protection is essential.
Freshwater	Wash monthly; protect quarterly	Much lower corrosion risk.
Chlorinated water	Rinse immediately; wash weekly	Chlorine is harsh on 304; avoid splashes from pool cleaners.

Protective Coatings (Every 1–3 Months in Saltwater)

304 needs more frequent protection than 316.

Recommended coatings:

- Polymer sealants
- Marine stainless wax
- Corrosion-block sprays (light, non-oily types)

Benefits:

- Reduces chloride attack
- Slows tea staining
- Helps maintain the passive oxide layer

Installation Guide.

Installation Tools

- Tools:

- Measuring Tape
- Drill
 - 1/2-inch Drill Bit
 - 3/8-inch Drill bit
 - 2.5 Inch hole bit
- Short “right angled” drill attachment (To drill in tight confines)
- Torque wrench
 - 3/4 inch socket
 - 13 MM Socket
- Adjustable Crecent Wrench
- Blue Lock Tight (Thread Locker)
- Marker
- Professional installation: Placement guide tool.

- Environmental conditions:

Dry deck, Pontoon on land

- Components:

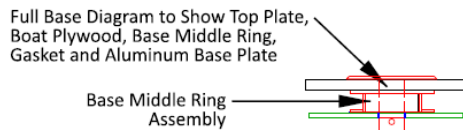
- Top Bar
- Bottom Bar
- 8 - 3/8 x 1.25 inch Stainless Steel bolts
- 8- 3/8 inch lock washers
- 8- 3/8 inch washer
- 8- 3/8 inch nut
- 6- 1/2 x 3 inch Stainless Carriage Bolts
- 6- 1/2 inch nut
- Base (Top)
- Base (Middle)
- Base (Bottom Aluminum)

Installation Instructions

Preparation: Review Install Disclaimer, choose mounting location, dry-fit (Use Placement guide tool for professional installation).

Step 1: Make certain to check the placement and ensure the location is acceptable. **(You are drilling permanent holes!)**

- There needs to be at least 4.5 inches of clearance from the center of the placement clear (top AND bottom).
- There needs to be access to at least two structural rails that cross the pontoon (to bolt to frame).
- Align bolt pattern to have one hole closest to the front of the boat and one toward the rear. (When installing it is best to make the holding pin holes to face front and rear of your watercraft.)



Step 2: Installing the top plate and marking holes for the middle plate.

- Mark the center point of the opening with a marker.
- Use the 2.5-inch “hole drill” to drill a hole for the top plate.
- Put the top plate in the hole and position the holding pin holes to face front and rear of your watercraft.
- Mark where the 6 ½ inch holes through the deck need to be drilled.
- Remove the top plate and drill the holes with a ½ inch drill bit. (It is best to widen these holes for some clearance.)

Step 3: Bolt the top and middle plates to the decking.

- Put the top plate back into position.
- Put a carriage bolt through the front facing bolt hole.
- Bring middle plate and bolt together with the ½ inch nut through the deck. Make hand tight.
- Repeat with rear facing bolt.
- Repeat for all bolts.
- Once good positioning is confirmed, loosen all bolts enough to get thread locker on.
- Put on the thread locker and tighten until the top plate sinks into the padding of you watercraft flooring (Once boat padding is pressed down, do not tighten further or you risk damaging the plywood of your deck.)

Step 4: Installing the bottom aluminum plate; connecting aluminum plate to the “middle” plate and attaching the aluminum plate to the frame of your watercraft. (Caution: this is the most difficult step!)

- Your aluminum base plate has a five holes pre drilled into it. Place the aluminum plate over the larger hole to center the plate.
- Ensure there are at least two structural beams the plate can attach to when placing the plate.
- Using a 3/8 inch bolt and washer (Provided) bolt the plates together.
- Where the aluminum plate crosses the structural bars drill 3/8 inch holes through both the plate and the frame of your watercraft (See Fig 6)
- Using a 3/8 inch bolt, washer and lock nut bolt the aluminum plate to the the frame tightly. (Minimum two bolts per frame rail.)
- Check that all bolts are tight.

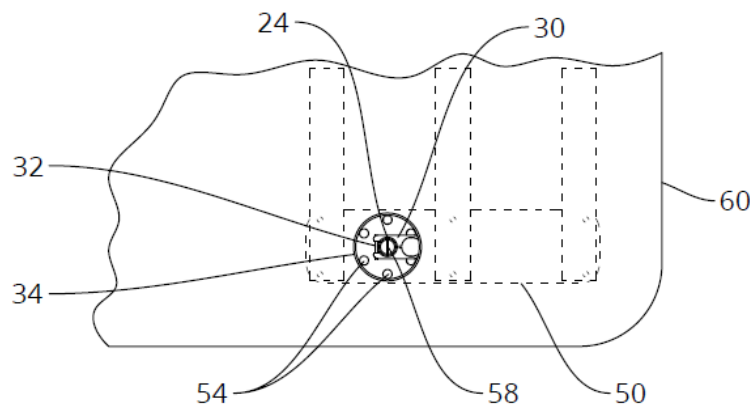
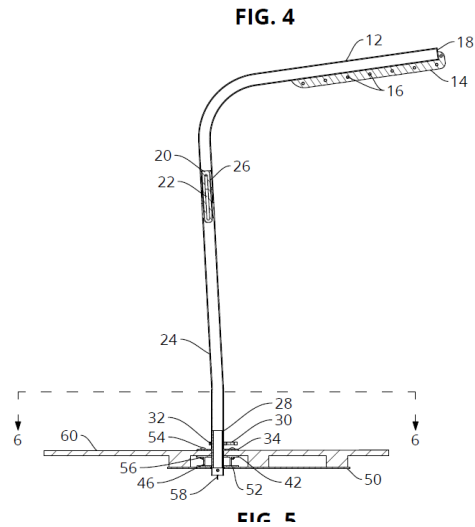


FIG. 6

Step 5: Installing the “The Yacht Cot Arm”. (Celebrate: this is the easiest step!)

- Place the lower pipe into the base plate.
- Lock it in the direction you desire with the locking pin.

- Attach the pipes together through the collapse mechanism, where the top and bottom bars meet, with a 3/8 inch bolt and lock nut. (tighten down tight when transporting to reduce movement, but it must have play to be put in use.)



Step 6: Installing and accessory. (Celebrate: also Easy!)

- Pick out an accessory you love (and can safely hold you)
- Use a high strength carabiner to attach it to the Yacht Cot System
- Enjoy your time, every time you relax on the water.

